

## Children with Special Needs Programs

**Our programs include: *The Early Intervention Program, Preschool Special Education Program, and the Physically Handicapped Children's Program* and are available to eligible children and families who reside in Lewis County.**

### **Early Intervention Program (Birth to 3 years)**



The Lewis County Early Intervention Program is designed to meet the very specific needs of disabled or developmentally delayed children, ages birth to three, and their families. Early Intervention services include, but are not limited to: medical services for diagnostic or evaluation purposes; early identification, screening, and assessment services; therapy services; family training; counseling; home visits, parent support groups, respite and transportation reimbursement and service coordination. New York

State Department Of Health Bureau of Early Intervention provides oversight to our program.

#### **Mission & Goals of the Early Intervention Program:**

The mission of the Early Intervention Program is to identify and evaluate as early as possible infants and toddlers whose healthy development is compromised and provide for appropriate intervention to improve child and family development.

This is accomplished by providing: **a Family-Centered Approach, a Community-Based Approach, Coordinated Services, Measurable Outcomes for Children & Families, a Medical Home, and Local Control, Fiscal Reform, & Programmatic Accountability.**

#### **Lewis County Early Intervention Program Statistics:**

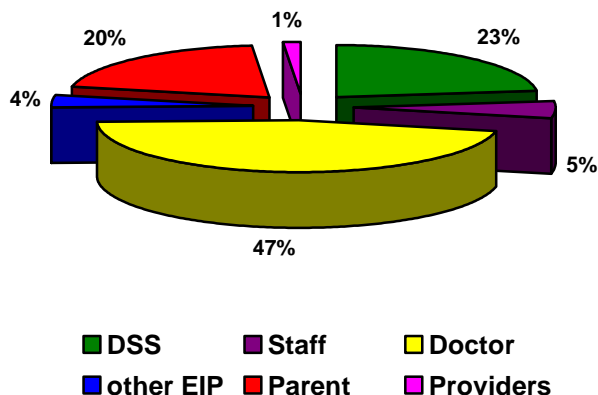
E.I. SUMMARY	2007	2008	2009
<b>New Referrals</b>	<b>47</b>	<b>60</b>	<b>74</b>
<b>Closures</b>	<b>43</b>	<b>72</b>	<b>33</b>
<b>Families Receiving Service Coordination</b>	<b>91</b>	<b>111</b>	<b>87</b>
<b>Transportation</b>	<b>40</b>	<b>40</b>	<b>9 bus** 13 reimb</b>
<b>Therapy (OT,PT,ST)</b>	<b>----</b>	<b>266</b>	<b>196</b>
<b>Special Education Teacher</b>	<b>41</b>	<b>119</b>	<b>84</b>
<b>Core Evaluations</b>	<b>43</b>	<b>67</b>	<b>56</b>
<b>Respite Services</b>	<b>6</b>	<b>2</b>	<b>1</b>
<b># of Billable EI Service Coordination Units*</b>	<b>4,191</b>	<b>3,288</b>	<b>2,684</b>

\* 15 min. increments = activities performed by the Service Coordinator directly related to the child's development and family's needs

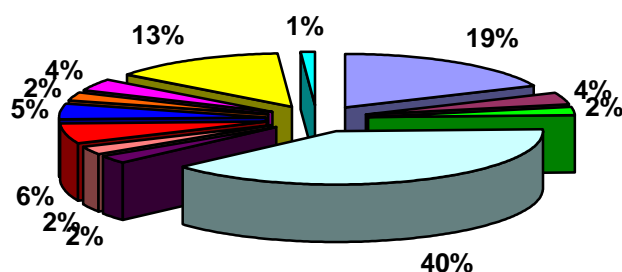
\*\* As of 07/09 bus transportation was no longer available to EI children for Toddler Group due to increase costs

*40% of all referrals received in 2009 were for concerns with speech & language development.  
78 children received direct therapy with a Speech-Language Pathologist in 2009.*

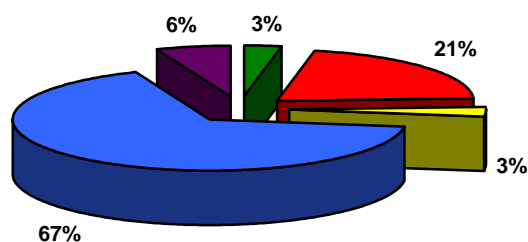
### Referral Sources



### Reasons for Referral



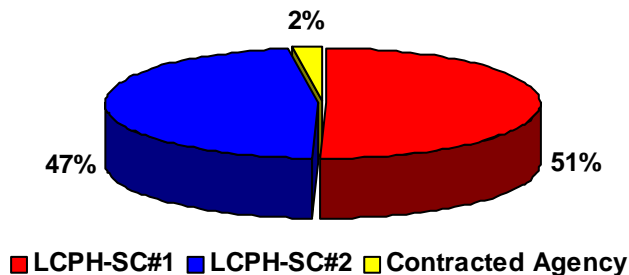
### Closure Reasons



- CAPTA
- Social-Emotional/Behavioral
- Foster Care/Adoption
- Communication
- Autism/Sensory
- Transfer from other EIP
- Diagonosed Condition
- General Developmental Delay
- Prematurity
- Growth Delay
- Motor
- Feeding Concerns

- Delay/Condition Resolved
- Family Refused
- Transitioned to 3-5 Program
- Found Not Eligible at Evaluation
- Family moved out of State

### Service Coordinator Caseloads

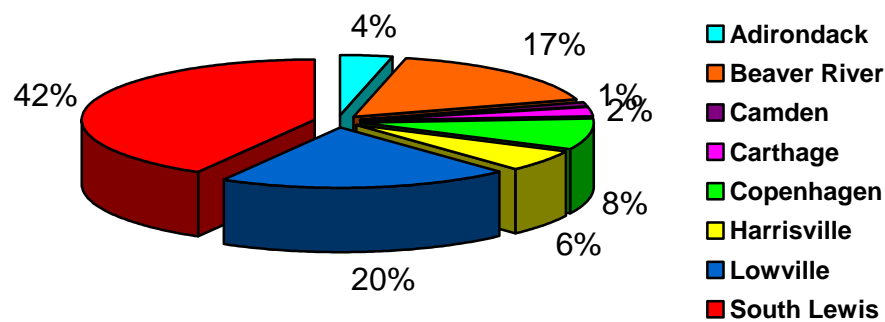


## Preschool Special Education Program (3-5 Years)

This program focuses on the educational needs of children from age 3 to age 5, until they are Kindergarten eligible. The Committee on Preschool Special Education (CPSE), located in the school district where the child resides, authorizes all services and evaluations. The school districts within the Lewis County Preschool Special Education Program Jurisdiction include:



### Preschool Special Education Breakdown by School District



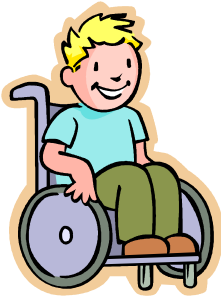
Referrals are made directly to the school district of residence by parents and families, as well as by local agencies involved with children, such as Head Start and DSS, upon consent of a parent. The Municipality Representative serves as a member of the CPSE and after authorization by the committee, oversees the fiscal administration of the program through the local Public Health Department. Within the evaluation process, specific developmental needs are assessed such as: gross and fine motor skills, speech and language skills, vision and hearing concerns and educational and social development. Program oversight is provided through the State Education Department.

<b>PRESCHOOL SUMMARY</b>	<b>0809 School Year</b>	<b>0910 School Year (thru 12/31/09)</b>
<b># of Children Served</b>	<b>118</b>	<b>84</b>
<b># of Children in Integrated Programs</b>	<b>13</b>	<b>10</b>
<b># of Children Receiving Related Services (Speech, OT, PT, SEIT)</b>	Speech—77 OT—42 PT—24 SEIT—15 CSW—10	Speech—65 OT—37 PT—17 SEIT—16 CSW—4
<b># Receiving Transportation</b>	<b>10</b>	<b>10</b>

\* split this year by school calendar

# Physically Handicapped Children's Program (PHCP)

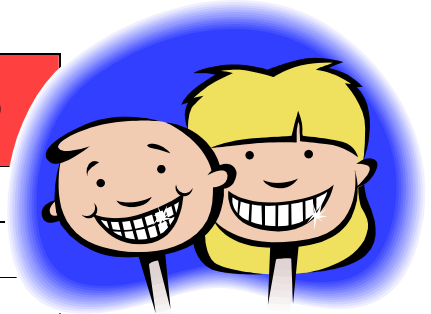
## & Children with Special Health Care Needs Program (CSHCN)



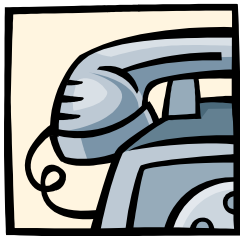
This program was created by the New York State Department Of Health to ensure access to health care and diagnostic services for chronically ill and disabled children from birth to 21 years of age. This program is used for children when there is no other payer source for the medical services they need. All services must be pre-approved, and children must meet county financial and eligibility criteria. There are two components of this program; the Diagnosis and Evaluation Component, and the Treatment Program.

CSHCN works hand-in-hand with PHCP and assists families and children, age 0-21 who have or are suspected of having a serious or chronic physical, developmental, behavioral, or emotional condition; and who also require health and related services of a type or amount beyond that required by children generally. The CSHCN Program can assist with referrals to specialist, researching conditions and specialists who treat those conditions, insurance questions, SSI questions and applications, and other health-related information inquiries. Families can call the CSHCN Program directly or community agencies and physicians can refer a family.

PHCP Program Year	2007	2008	2009
Total Cases Processed	100	96	98
New Cases	41	35	14
Cases Determined Ineligible	3	4	1

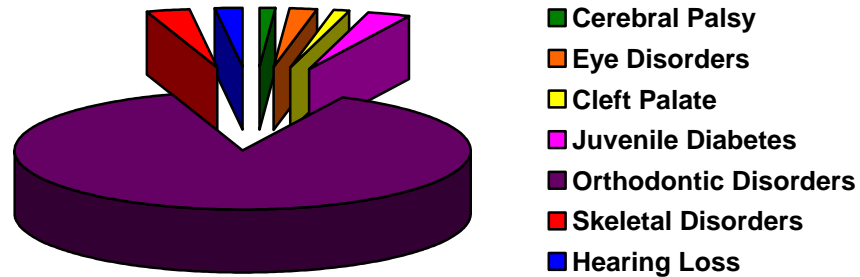


**CSHCN assisted 10 families throughout 2009 with the following information:**



- Hearing loss/hearing aids
- Behavioral testing and diagnosis
- Insurance bills
- Locating child care for child with special needs
- Information on an aide for Universal Preschool
- Payment sources for autism testing
- Payment sources for dental surgery not covered by insurance or PHCP
- Cochlear implant information and locating Medicaid providers
- Locating Medicaid providers for vision services not covered under Committee on Special Education
- Locating resources for dental work not covered by insurance when child not eligible for PHCP

## PHCP Diagnoses/Conditions



### CROSS SECTION OF PHCP ELIGIBLE CASES:

DIAGNOSIS / CONDITION	2007	2008	2009
Asthma/Allergy	<u>0</u>	<u>0</u>	0
Blood Disorders	<u>1</u>	<u>0</u>	0
Brain Trauma	0	0	0
Cerebral Palsy	2	1	1
Chronic/Multiple Disorders/Other	0	0	0
Cleft Palate	3	3	1
Congenital Disorders	3	1	0
Down's Syndrome	0	0	0
Endocrine Disorder	0	0	0
Eye Disorders	4	3	2
Hearing Loss	3	3	2
Heart Disease	0	0	0
Hydrocephalus	0	0	0
Juvenile Diabetes	3	3	3
Kidney Disorder	0	0	0
Metabolic Disorder	0	0	0
Microencephaly	0	0	0
Neurological Disorder	0	0	0
<i>Orthodontic Disorder</i>	77	78	86
Orthopedic Disorder	3	0	0
Prematurity	0	0	0
Respiratory Disorder	2	1	0
Skeletal Disorders	3	5	3
<b>TOTAL OF ALL CASES</b>	<b>102</b>	<b>97</b>	<b>98</b>



### **Child Find of Early Intervention**

*Child Find is a continuous process of public awareness activities, screening and evaluation designed to locate, identify, and refer as early as possible all young children with disabilities and their families who are in need of Early Intervention Program (Part C) or Preschool Special Education (Part B/619) services of the [Individuals with Disabilities Education Act \(IDEA\)](#)*

IDEA requires all states to have a "comprehensive Child Find system" to assure that all children who are in need of early intervention or special education services are located, identified, and referred. The lead agency for Part C of IDEA Early Intervention Program and for Part B/619 (serving preschoolers with special educational needs) in each state is responsible for planning and implement a comprehensive child find system. In some states, the lead agency for these two programs is one and the same, while in others; different agencies oversee the two programs.

<b>Enrollment Status for 2009</b>				
<b>New During</b>	<b>Active During</b>	<b>Closed During</b>	<b>Open &amp; Closed During</b>	<b>Total</b>
<b>5</b>	<b>8</b>	<b>7</b>	<b>6</b>	<b>26</b>

<b>Referral Sources for 2009</b>	
<b>Birth Certificate</b>	<b>1</b>
<b>Community Program</b>	<b>3</b>
<b>Parent/Family</b>	<b>1</b>
<b>Primary Health Care Provider</b>	<b>4</b>
<b>Early Intervention Program</b>	<b>1</b>
<b>Other</b>	<b>1</b>
<b>Total</b>	<b>11</b>

<b>Risk Factors by Child's Age for Total # of Cases in 2009</b>						
<b>Child Find Risk Factor</b>	<b>Child's Age at Time of Referral</b>					
	<b>&lt;1</b>	<b>1-&lt;2</b>	<b>2-&lt;3</b>	<b>3+</b>	<b>Unknown</b>	<b>Total</b>
<b>Parental Developmental Disability</b>	4	1	0	0	0	5
<b>Parent Difficulty with Parenting Functions</b>	5	2	0	0	0	7
<b>Parent-Infant Bonding Difficulties</b>	1	0	0	0	0	1
<b>Suspected Developmental Delay (Parental Concern/Screen)</b>	3	1	1	0	0	5
<b>Birth Weight &lt;1501 Grams</b>	2	1	0	0	0	3
<b>Gestational Age &lt; 33 Weeks</b>	0	1	0	0	0	1
<b>Growth Deficiency/Nutritional Problems</b>	2	0	0	0	0	2
<b>NICU (10+ days)</b>	4	0	0	0	0	4
<b>Child Abuse/Maltreatment</b>	1	1	2	0	0	4
<b>Foster Care Placement</b>	1	0	0	0	0	1
<b>Domestic Violence</b>	0	0	1	0	0	1
<b>Maternal Education &lt; High School</b>	6	2	0	0	0	8
<b>Maternal Prenatal Drug Use (Therapeutic)</b>	1	0	0	0	0	1
<b>Maternal Prenatal Drug Use (Illicit)</b>	1	0	0	0	0	1
<b>Other</b>	7	0	1	0	0	8
<b>Totals</b>	<b>38</b>	<b>9</b>	<b>5</b>	<b>0</b>	<b>0</b>	<b>52</b>

<b>Closures for 2009</b>	
<b>Risk / Condition Resolved</b>	7
<b>Family Moved Out Of County</b>	2
<b>Transfer to Early Intervention Program</b>	3
<b>Child &gt; 3 years</b>	1
<b>Total</b>	13